

AC Vacuum Contactors

USAVAC - Low Voltage

- UL listed to 1500V
- CSA Certified to 1500V
- CE

- Three Ratings
- One Small Size

CV Series
NEMA Size 4 V200
IEC 200A



600V NEMA Size 4 135A

600Volt Nema Size 4 135A Contactor 3 Pole Nema ICS-2 UL508 CSA 22.2

Rating Nema Size 4	Maximum Horsepower KW Rating 3 Phase HP/KW				Open Type	Discount Schedule JC11
600V	200V	230V	460V	575V	Catalog #	Price
HP/KW	40/30	50/37	100/75	100/75	CV77U030406-*	\$1519.00

660Volt 200AMP Contactor 3 Pole IEC 947-4-1 UL508 CSA 22.2

Rating 200A	Maximum Horsepower/KW Rating 3 Phase HP/KW								Open Type	Discount Schedule JC11
1000V	200/208V	220/240V	380/400V	415/440V	460V	500V	575/600V	660-690V	Catalog #	Price
HP/KW	50/37	75/59	100/75	125/95	150/110	190/140	200/150	250/185	CV77U032006-*	\$1629.00

1500Volt 200AMP Contactor 3 Pole IEC 947-4-1 (1000V) UL508 (1500V) CSA 22.2 (1500V)

Rating 200A Nema V200	Maximum Horsepower/KW Rating 3 Phase HP/KW							Open Type	Discount Schedule JC11
1500V	200/208V	220/240V	400V	460V	575/600V	1000V	1500V	Catalog #	Price
HP/KW	50/37	75/59	125/95	150/110	175/130	300/225	500/370	CV77U031615-*	\$1693.00

Options Discount (Schedule JC11) Field Kits

Description	Catalog #	Price
Lug Kit #6 to 250mcm 3 Per Kit	KVC4-2	\$82
Aux. Contact Kit 2NO 2N/C 10A 600VAC	AK1	\$73
Aux. Contact Kit 2NO 2N/C 10MA 5VDC	AK3	\$220

Replacement Parts (Discount Schedule JC80)

Description	Catalog #	Price
Interrupter Phase Assembly	A77-457211A	\$520
Coil 110/120V 50/60 HZ	A77-460915A-1	\$248
Coil 220/240V 50/60 HZ	A77-460915A-2	\$248
Coil 380/415V 50/60 HZ	A77-460915A-3	\$248
Coil 440/480V 50/60 HZ	A77-460915A-4	\$248
Coil 125V DC	A77-460915A-5	\$248
Coil 250V DC	A77-460915A-6	\$248
Control PAK 110/120 50/60 HZ	A77-460916A-1	\$258
Control PAK 220/240 50/60 HZ	A77-460916A-2	\$258
Control PAK 380-415V 50/60 HZ 440-480V 50/60 HZ	A77-460916A-3	\$258
Aux. Contact Kit 2N/O 1N/C +1 N/C Late Break	AK Std.	\$ 92

Ordering Information

*** Coil Table**

- Use complete catalog number when ordering. Replace the (*) with the suffix from the coil table.

- Engineering Data page A7.
- Renewal Parts page A2.

Voltage	Suffix
120 AC	76
240 AC	26
380 AC	38
460 AC	46
125V DC	125
250V DC	250

AC Mechanically Interlocked Vacuum Contactors Unwired

USAVAC - Low Voltage

A

- UL listed to 1500V
- CSA Certified to 1500V
- CE
- NEMA Size 4 & V 200 1500V
- IEC 200A

- Three Ratings
- One Small Size
- Use for Reversers, Reduced Voltage Auto Transformer, Wye-Delta, 2 speed single winding, or 2 speed 2 winding applications

3 Pole Nema Rated ICS-2 UL508 CSA 22.2 Size 4 Mechanically Interlocked Pair Unwired 600V 135A Contactor

Rating Nema Size 4	Maximum Horsepower/KW Rating 3 Phase HP/KW					Open Type	Discount Schedule JC11
600V	200V	230V	460V	575V		Catalog #	Price
HP/KW	40/30	50/37	100/75	100/75		CV31U030406*-43	\$3520

3 Pole IEC947-4-1 UL508 CSA 22.2 Mechanically Interlocked Pair Unwired 660V 200A

Rating 200A	Maximum Horsepower/KW Rating 3 Phase					Open Type	Discount Schedule JC11
1000V	200/208V	220/240V	380/415V	460V	575/660V	Catalog #	Price
HP/KW	50/37	75/59	100/75	150/110	200/150	CV31U032006*-43	\$3740

3 Pole Nema Rated ICS-29 IEC947.4.1 (1000V) UL508 1500V CSA 22.2 Mechanically Interlocked Pair Unwired 1500V 200A Contactor

Rating 200A Nema V200	Maximum Horsepower/KW Rating 3 Phase							Open Type	Discount Schedule JC11
1500V	200/208V	220/240V	380/415V	460V	575/660V	1000V	1500V	Catalog #	Price
HP/KW	50/37	80/59	100/75	150/110	200/150	300/225	500/370	CV31U031615*-43	\$3980

Options Discount (Schedule JC11)

Description	Catalog #	Price
Lug Kit #6 to 250mcm 3 Per Kit	KVC4-2	\$82
Aux. Contact Kit 2N/O 2N/C 10A 600V ac	AK1	\$73
Aux. Contact Kit 2N/O 2N/C 10MA 5V dc	AK3	\$220

Replacement Parts (Discount Schedule JC80)

Description	Catalog #	Price
Interrupter Phase Assembly	A77-457211A	\$520
Coil 110/120V 50/60 HZ	A77-460915A-1	\$248
Coil 220/240V 50/60 HZ	A77-460915A-2	\$248
Coil 380/415V 50/60 HZ	A77-460915A-3	\$248
Coil 440/480V 50/60 HZ	A77-460915A-4	\$248
Coil 125V DC	A77-460915A-5	\$248
Coil 250V DC	A77-460915A-6	\$248
Control PAK 110/120 50/60 HZ	A77-460916A-1	\$258
Control PAK 220/240 50/60 HZ	A77-460916A-2	\$258
Control PAK 380-415V 50/60 HZ 440-480V 50/60 HZ	A77-460916A-3	\$258
Aux. Contact Kit 2N/O 1N/C +1 N/C Late Break	AK Std.	\$ 92

Plug Stop Jogging Duty

Nema Size	200V	230V	400V	460V	575V
4	25HP	30HP	50HP	60HP	-
V200	40HP	60HP	75HP	100HP	125HP

Ordering Information

* Coil Table

- Use complete catalog number when ordering. Replace the (*) with the suffix from the coil table.

- Engineering Data page A7.
- Renewal Parts page A3.

Voltage	Suffix
120 AC	76
240 AC	26
380 AC	38
450 AC	46
125V DC	125
250V DC	250

AC Reversing Vacuum Contactors Wired

USAVAC - Low Voltage

- UL listed to 1500V
- CSA Certified to 1500V
- CE

- Three Ratings
- One Small Size
- CV Series Nema Size 4 & V200
- IEC 200A

A

3 Pole Nema Rated ICS-2 UL508 CSA 22.2 Size 4 Mechanically Interlocked Pair Unwired 600V 135A Contactor

Rating Nema Size 4	Maximum Horsepower/KW Rating 3 Phase HP/KW				Open Type	Discount Schedule JC11
600V	200V	230V	460V	575V	Catalog #	Price
HP/KW	40/30	50/37	100/75	100/75	CV31U030406*-	\$3931

3 Pole IEC947-4-1 UL508 CSA 22.2 Mechanically Interlocked Pair Unwired 660V 200A

Rating 200A	Maximum Horsepower/KW Rating 3 Phase					Open Type	Discount Schedule JC11
1000V	200/208V	220/240V	380/415V	460V	575/660V	Catalog #	Price
HP/KW	50/37	75/59	100/75	150/110	200/150	CV31U032006*-	\$4355

3 Pole Nema Rated ICS-29 IEC947.4.1 (1000V) UL508 1500V CSA 22.2 Mechanically Interlocked Pair Unwired 1500V 200A Contactor

Rating 200A Nema V200	Maximum Horsepower/KW Rating 3 Phase						Open Type	Discount Schedule JC11
1500V	200/208V	220/240V	380/415V	460V	575/660V	1000V 1500V	Catalog #	Price
HP/KW	50/37	80/59	100/75	150/110	200/150	300/225 500/370	CV31U031615*-	\$4538

Options Discount (Schedule JC11)

Description	Catalog #	Price
Lug Kit #6 to 250mcm 3 Per Kit	KVC4-2	\$82
Aux. Contact Kit 2N/O 2N/C 10A 600V ac	AK1	\$73
Aux. Contact Kit 2N/O 2N/C 10MA 5V dc	AK3	\$220

Replacement Parts (Discount Schedule JC80)

Description	Catalog #	Price
Interrupter Phase Assembly	A77-457211A	\$520
Coil 110/120V 50/60 HZ	A77-460915A-1	\$248
Coil 220/240V 50/60 HZ	A77-460915A-2	\$248
Coil 380/415V 50/60 HZ	A77-460915A-3	\$248
Coil 440/480V 50/60 HZ	A77-460915A-4	\$248
Coil 125V DC	A77-460915A-5	\$248
Coil 250V DC	A77-460915A-6	\$248
Control PAK 110/120 50/60 HZ	A77-460916A-1	\$258
Control PAK 220/240 50/60 HZ	A77-460916A-2	\$258
Control PAK 380-415V 50/60 HZ 440-480V 50/60 HZ	A77-460916A-3	\$258
Aux. Contact Kit 2N/O 1N/C +1 N/C Late Break	AK Std.	\$ 92

Plug Stop Jogging Duty

Nema Size	200V	230V	400V	460V	575V
4	25HP	30HP	50HP	60HP	-
V200	40HP	60HP	75HP	100HP	125HP

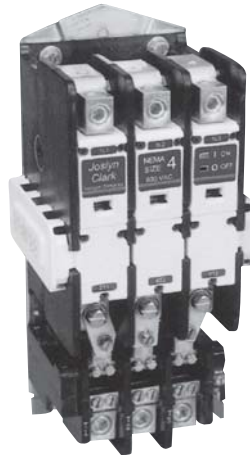
Ordering Information

- Use complete catalog number when ordering. Replace the (*) with the suffix from the coil table.
- Engineering Data page A7.
- Renewal Parts page A4.

* Coil Table

Voltage	Suffix
120 AC	76
240 AC	26
380 AC	38
460 AC	46
125V DC	125
250V DC	250

- UL listed to 1500V
- CSA Certified to 1500V
- CE



- Three Ratings
- One Small Size

CV Series
NEMA Size 4 V200A
IEC 200A

A

600V NEMA Size 4 135A

600Volt Nema Size 4 135A Starter 3 Pole Nema ICS-2 UL508 CSA 22.2

Rating Nema Size 4	Maximum Horsepower/KW Rating 3 Phase HP/KW				Open Type	Discount Schedule JC11
600V	200V	230V	460V	575V	Catalog #	Price
HP/KW	40/30	50/37	100/75	100/75	CV13U030406-*	\$1674.00

660Volt 200AMP Starter 3 Pole IEC 947-4-1 UL508 CSA 22.2

Rating 200A	Maximum Horsepower/KW Rating 3 Phase HP/KW								Open Type	Discount Schedule JC11
660V	200/208V	220/240V	380/400V	415/440V	460V	500V	575/600V	660-690V	Catalog #	Price
HP/KW	50/37	75/59	100/75	125/95	150/110	190/140	200/150	250/185	CV13U032006-*	\$2288.00

1500Volt 200 AMP Starter 3 Pole IEC 947-4-1 (1000V) UL508 (1500V) CSA 22.2 (1500V)

Rating 200A Nema V200	Maximum Horsepower/KW Rating 3 Phase HP/KW							Open Type	Discount Schedule JC11
1500V	200/208V	220/240V	400V	460V	575/600V	1000V	1500V	Catalog #	Price
HP/KW	50/37	75/59	125/95	150/110	175/130	300/225	500/370	CV13U031615-*	\$2654.00

Replacement Parts (Discount Schedule JC80)

Description	Catalog #	Price
Interrupter Phase Assembly	A77-457211A	\$520
Coil 110/120V 50/60 HZ	A77-460915A-1	\$248
Coil 220/240V 50/60 HZ	A77-460915A-2	\$248
Coil 380/415V 50/60 HZ	A77-460915A-3	\$248
Coil 440/480V 50/60 HZ	A77-460915A-4	\$248
Coil 125V DC	A77-460915A-5	\$248
Coil 250V DC	A77-460915A-6	\$248
Control PAK 110/120 50/60 HZ	A77-460916A-1	\$258
Control PAK 220/240 50/60 HZ	A77-460916A-2	\$258
Control PAK 380-415V 50/60 HZ 440-480V 50/60 HZ	A77-460916A-3	\$258
Aux. Contact Kit 2N/O 1N/C +1 N/C Late Break	AK Std.	\$ 92

Options Discount (Schedule JC11) Field Kits

Description	Catalog #	Price
Lug Kit #6 to 250mcm 3 Per Kit	KVC4-2	\$82
Aux. Contact Kit 2N/O 2N/C 10A 600VAC	AK1	\$73
Aux. Contact Kit 2N/O 2N/C 10MA 5VDC	AK3	\$220

Ordering Information

- Use complete catalog number when ordering. Replace the (*) with the suffix from the coil table.
- Order Heaters at \$18.00 each from page A35.

* Coil Table

- Engineering Data page A7.
- Renewal Parts page A5.

Voltage	Suffix
120 AC	76
240 AC	26
380 AC	38
460 AC	46
125V DC	125
250V DC	250

- UL listed to 1500V
- CSA Certified to 1500V
- CE

- Three Ratings
- One Small Size
- CV Series Nema Size 4 & V200
- IEC 200A

CV Series
NEMA Size 4
IEC 200A

A

3 Pole Nema Rated ICS-2 UL508 CSA 22.2 Size 4 Mechanically Interlocked Pair Unwired 600V 135A Contactor

Rating Nema Size 4	Maximum Horsepower/KW Rating 3 Phase HP/KW					Open Type	Discount Schedule JC11
600V	200V	230V	460V	575V		Catalog #	Price
HP/KW	40/30	50/37	100/75	100/75		CV30U030406*-	\$4381

3 Pole IEC947-4-1 UL508 CSA 22.2 Mechanically Interlocked Pair Unwired 660V 200A

Rating 200A	Maximum Horsepower/KW Rating 3 Phase					Open Type	Discount Schedule JC11
1000V	200/208V	220/240V	380/415V	460V	575/660V	Catalog #	Price
HP/KW	50/37	75/59	100/75	150/110	200/150	CV30U032006*-	\$4805

3 Pole Nema Rated ICS-29 IEC947.4.1 (1000V) UL508 1500V CSA 22.2 Mechanically Interlocked Pair Unwired 1500V 200A Contactor

Rating 200A Nema V200	Maximum Horsepower/KW Rating 3 Phase							Open Type	Discount Schedule JC11
1500V	200/208V	220/240V	380/415V	460V	575/660V	1000V	1500V	Catalog #	Price
HP/KW	50/37	80/59	100/75	150/110	200/150	300/225	500/370	CV30U031615*-	\$4988

Options Discount (Schedule JC11)

Description	Catalog #	Price
Lug Kit #6 to 250mcm 3 Per Kit	KVC4-2	\$82
Aux. Contact Kit 2N/O 2N/C 10A 600V ac	AK1	\$73
Aux. Contact Kit 2N/O 2N/C 10MA 5V dc	AK3	\$220

Replacement Parts (Discount Schedule JC80)

Description	Catalog #	Price
Interrupter Phase Assembly	A77-457211A	\$520
Coil 110/120V 50/60 HZ	A77-460915A-1	\$248
Coil 220/240V 50/60 HZ	A77-460915A-2	\$248
Coil 380/415V 50/60 HZ	A77-460915A-3	\$248
Coil 440/480V 50/60 HZ	A77-460915A-4	\$248
Coil 125V DC	A77-460915A-5	\$248
Coil 250V DC	A77-460915A-6	\$248
Control PAK 110/120 50/60 HZ	A77-460916A-1	\$258
Control PAK 220/240 50/60 HZ	A77-460916A-2	\$258
Control PAK 380-415V 50/60 HZ 440-480V 50/60 HZ	A77-460916A-3	\$258
Aux. Contact Kit 2N/O 1N/C +1 N/C Late Break	AK Std.	\$ 92

Plug Stop Jogging Duty

Nema Size	200V	230V	400V	460V	575V
4	25HP	30HP	50HP	60HP	-
V200	40HP	60HP	75HP	100HP	125HP

Ordering Information

- Use complete catalog number when ordering. Replace the (*) with the suffix from the coil table.
- Order Heaters at \$18.00 each from page A35.

*** Coil Table**

- Engineering Data page A7.
- Renewal Parts page A6.

Voltage	Suffix
120 AC	76
240 AC	26
380 AC	38
450 AC	46
125V DC	125
250V DC	250

Technical Specifications CV Series

Description Cat #	NEMA Size 4 600V CV 77U030406-*	200 Amp 1000V CV 77U032006-*	200 Amp 1500V CV 77U031615-*
Standard	NEMA 1CS-2 UL508 CSA22.2	IEC 947-4-1 UL508 CSA22.2	NEMA 1CS9-2 1500V IEC 947-4-1 1000V UL508 CSA22.2 1500V
Power Ratings			
Insul. & Operating Volt	600 Volts	1000 Volts	1500 Volts
Rated Oper. AC1	150 Amps	200 Amps	200 Amps
Rated Oper. AC3	100 HP 460/575V	250 HP 185KW-660V	500 HP 370KW-1500V
Rated Oper. AC4	60 HP 460/575V	175HP-130KW-660V	315HP-235KW-1500V
Rated Frequency	50 - 400 Hz		
Making Current	2000 Amps		
Breaking Current	1600 Amps		
Dielectric Strength	6Kv - 1 Min.		
Interrupting Current	2.2 KA		
Short Time Current 1 Sec.	5000 A		
Short Time Current 10 Sec	1600 A		
Mechanical Life	1.2 X 10 ⁶		
Elect. Life AC3 Duty	1 X 10 ⁶		
Switching Frequency	600 / Hour (1 Every 6 Sec)		
Withstand Current	10KA50Msec		
Chop Current Max	0.9 A		
Operating Range	-15% + 10% - at Range Voltage		
Inrush Power VA	1200VA 20 ms Duration		
Holding Power VA	12 VA		
Opening Time MS	120ms		
Closing Time MS	20-40ms		
Pick-Up Voltage	80% Cold 85% Hot or less		
Drop-Out Voltage	70% or less		
Recommended CPT	400VA Machine Tool Transformer 5% Regulation at 20%pf		
Applications Ratings			
Mounting Installation	All Planes (Contactor only)		
Altitude	6600 ft. 2000 Meters		
Ambient Storage	-65°F (-54°C) +160°F (71°C)		
Operating	-40°F (-40°C) +105°F (41°C)		
Vibration / Shock	40Hz - 2G. / 30G.		
Weight	13 lbs. 5.9Kg.		

	Motor HP/KW AC3	
Voltage	150A	200A
208	40/30	50/37
220/240	50/37	75/59
380/400	----	100/75
415/440	----	125/93
460	100/75	150/110
500	----	190/140
575/600	100/75	200/150
660/690	----	250/185
1000	----	300/225
1500	----	500/370
Three Phase Transformer Load KVA		
Voltage	150A	200A
208	54	72
220/240	57	55
380/400	99	135
415/440	108	152
460/500	119	173
575/600	130	207
660	171	225
1000	260	346
1500	390	519
Three Phase Capacitor Load KVAR		
Voltage	150A	200A
208	40	54
220/240	43	62
380/400	74	104
415/440	81	114
460	90	127
575/600	115	156
1000	195	260
1500	292	390

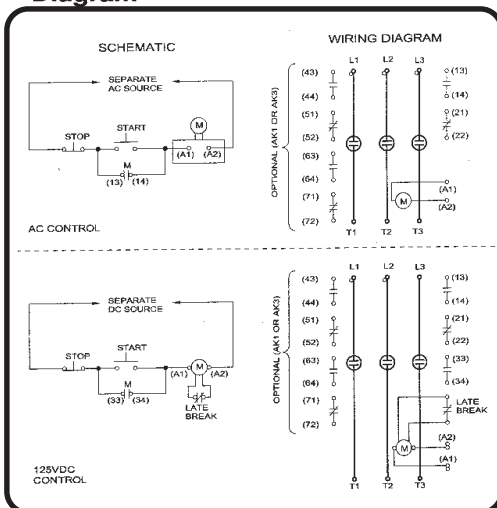
A

Options

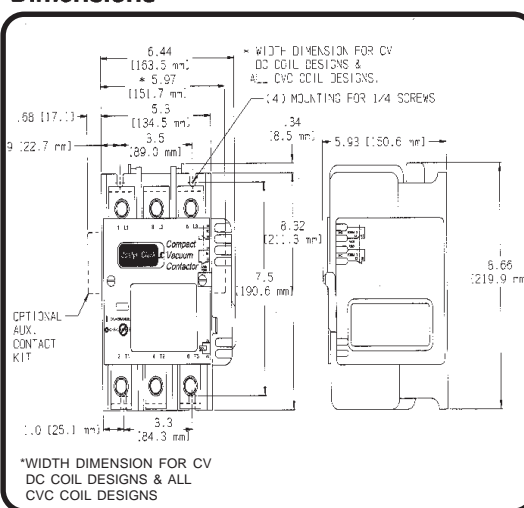
- Lug Kit 2/0 250mcm Cat.# KVC4-2
- Auxilliary Contact Kits
- 2NO. 2NC 600V. 10A ac. Cat.# AK1
- 2NO. 2NC 5V.10mA dc. Cat.# AK3

Only 1 Kit can be added for total of 3 N/O 3 N/C contacts

Diagram



Dimensions



Coils

Description	HZ.	Cat. Suffix
110/120V	50/60Hz.	-76
220/240V	50/60Hz.	-26
380/415V	50/60Hz.	-38
440/480V	50/60Hz.	-46
125V dc		-125
250V dc		-250

For 250V dc contact 21/22 is Late Break N/C in series with 'm' late break

- UL listed to 1500V
- CSA Certified to 1500V
- CE

- Three Ratings
- One Small Size

CV Series
NEMA Size 5
IEC 400A



600V NEMA Size 5 270A



1000V 400A

600Volt Nema Size 5 270A Contactor 3 Pole Nema ICS-2 UL508 CSA 22.2

Rating Nema Size 5	Maximum Horsepower/KW Rating 3 Phase HP/KW				Open Type Catalog #	Discount Schedule JC11 Price
	600V	200V	230V	460V		
HP/KW	75/56	100/75	200/150	200/150	CV77U030506-*	\$1940.00

1000Volt 400AMP Contactor 3 Pole IEC 947-4-1 UL508 CSA 22.2

Rating 400A	Maximum Horsepower/KW Rating 3 Phase HP/KW						Open Type Catalog #	Discount Schedule JC11 Price
	1000V	200/208V	220/240V	380/415V	460V	575/600V		
HP/KW	100/75	150/112	250/187	300/220	400/300	450/336	CV77U034A06-*	\$2122.00

1500V 400AMP Contactor 3 Pole IEC 947-4-1 (1000V) UL508 (1500V) CSA 22.2 (1500V)

Rating 400A	Maximum Horsepower/KW Rating 3 Phase HP/KW								Open Type Catalog #	Discount Schedule JC11 Price
	1500V	200/208V	220/240V	415/440V	460V	575/600V	660-690V	1000V		
HP/KW	100/75	150/112	250/187	300/220	400/300	500/370	700/520	850/650	CV77U034A15-*	\$2242.00
Nema V320	100/70	125/95	200/150	300/220	300/220	-	500/370	900/670	CV77U033A15-*	\$2242.00

Options (Discount Schedule JC11) Field Kits

Description	Catalog #	Price
Lug Kit 3 Per Kit #4-500 mcm	KVC5-1	\$ 90
Lug Kit 3 Per Kit (2) #6-300 mcm	KVC5-2	\$100
Aux Contact Kit 2N/O 2N/C 10A 600VAC	AK1	\$73
Aux. Contact Kit 2N/O 2N/C 10MA 5VDC	AK3	\$220

Replacement Parts (Discount Schedule JC80)

Description	Catalog #	Price
Interrupter Phase Assembly	A460880A-1	\$650
Coil 110/120V 50/60 HZ	A77-460930A-1	\$284
Coil 220/240V 50/60 HZ	A77-460930A-2	\$284
Coil 380/415V 50/60 HZ	A77-460930A-3	\$284
Coil 440/480V 50/60 HZ	A77-460930A-4	\$284
Coil 125V DC	A77-460930A-5	\$284
Coil 250V DC	A77-460930A-6	\$284
Control PAK 110/120 50/60 HZ	A77-460916A-4	\$258
Control PAK 220/240 50/60 HZ	A77-460916A-5	\$258
Control PAK 380-415V 50/60 HZ 440-480V 50/60 HZ	A77-460916A-6	\$258
Aux. Contact Kit 2N/O 1N/C +1 N/C Late Break	AK Std.	\$ 92

Ordering Information

- Use complete catalog number when ordering. Replace the (*) with the suffix from the coil table.
- Engineering Data page A13.
- Renewal Parts page A8.

*** Coil Table**

Voltage	Suffix
120 AC	76
240 AC	26
380 AC	38
460 AC	46
125V DC	125
250V DC	250

AC Mechanically Interlocked Vacuum Contactors Unwired

USAVAC - Low Voltage

- UL listed to 1500V
- CSA Certified to 1500V
- CE
- NEMA Size 5 & V320
- IEC 400A

- Three Ratings
- One Small Size
- Use for Reversers, Reduced Voltage Auto Transformer Starters, Wye-Delta, 2 speed single winding, starter applications

A

600Volt Nema Size 5 270A Mechanically Interlocked Pair Unwired 3 Pole Nema ICS-2 UL508 CSA 22.2

Rating Nema Size 5	Maximum Horsepower/KW Rating 3 Phase HP/KW				Open Type	Discount Schedule JC11
600V	200V	230V	460V	575V	Catalog #	Price
HP/KW	75/56	100/75	200/150	200/150	CV31U030506-*43	\$5984.00

1000Volt 400AMP Mechanically Interlocked Pair Unwired 3 Pole IEC 947-4-1 UL508 CSA 22.2

Rating 400A	Maximum Horsepower/KW Rating 3 Phase HP/KW						Open Type	Discount Schedule JC11
1000V	200/208V	220/240V	380/415V	460V	575/600V	660-690V	Catalog #	Price
HP/KW	100/75	150/112	250/187	300/220	400/300	450/336	CV31U034A06-*43	\$6606.00

1500V 400AMP Mechanically Interlocked Pair Unwired 3 Pole IEC 947-4-1 (1000V) UL508 (1500V) CSA 22.2 (1500V)

Rating 400A	Maximum Horsepower/KW Rating 3 Phase HP/KW								Open Type	Discount Schedule JC11
1500V	200/208V	220/240V	415/440V	460V	575/600V	660-690V	1000V	1500V	Catalog #	Price
HP/KW	100/75	150/112	250/187	300/220	400/300	500/370	700/520	850/650	CV31U034A15-*43	\$6972.00
Nema V320	100/70	125/95	200/150	300/220	300/220	-	500/370	900/670	CV31U03A15-*43	\$6972.00

Options (Discount Schedule JC11) Field Kits

Description	Catalog #	Price
Lug Kit 3 Per Kit #4-500 mcm	KVC5-1	\$ 90
Lug Kit 3 Per Kit (2) #6-300 mcm	KVC5-2	\$100
Aux Contact Kit 2N/O 2N/C 10A 600VAC	AK1	\$73
Aux. Contact Kit 2N/O 2N/C 10MA 5VDC	AK3	\$220

Plug Stop Jogging Duty

Nema Size	200V	230V	400V	460V	575V
5	50HP	60HP	100HP	120HP	-
V320	75HP	100HP	150HP	175HP	200HP

Replacement Parts (Discount Schedule JC80)

Description	Catalog #	Price
Interrupter Phase Assembly	A460880A-1	\$650
Coil 110/120V 50/60 HZ	A77-460930A-1	\$284
Coil 220/240V 50/60 HZ	A77-460930A-2	\$284
Coil 380/415V 50/60 HZ	A77-460930A-3	\$284
Coil 440/480V 50/60 HZ	A77-460930A-4	\$284
Coil 125V DC	A77-460930A-5	\$284
Coil 250V DC	A77-460930A-6	\$284
Control PAK 110/120 50/60 HZ	A77-460916A-4	\$258
Control PAK 220/240 50/60 HZ	A77-460916A-5	\$258
Control PAK 380-415V 50/60 HZ 440-480V 50/60 HZ	A77-460916A-6	\$258
Aux. Contact Kit 2N/O 1N/C +1 N/C Late Break	AK Std.	\$ 92

Ordering Information

- Use complete catalog number when ordering. Replace the (*) with the suffix from the coil table.
- Engineering Data page A13.
- Renewal Parts page A9.

* Coil Table

Voltage	Suffix
120 AC	76
240 AC	26
380 AC	38
460 AC	46
125V DC	125
250V DC	250

AC Mechanically Interlocked Vacuum Contactors Wired

USAVAC - Low Voltage

- CE
- NEMA Size 5 & V320
- IEC 400A

- Three Ratings
- One Small Size
- Use for Reversers, Reduced Voltage Auto Transformer Starters, Wye-Delta, 2 speed single winding, starter applications

A

600Volt Nema Size 5 270A Contactor Mechanically Interlocked Pair Wired 3 Pole Nema ICS-2 UL508 CSA 22.2

Rating Nema Size 5	Maximum Horsepower/KW Rating 3 Phase HP/KW					Open Type	Discount Schedule JC11
600V	200V	230V	460V	575V		Catalog #	Price
HP/KW	75/56	100/75	200/150	200/150		CV31U030506-*	\$6719.00

1000Volt 400AMP Contactor Mechanically Interlocked Pair Wired 3 Pole IEC 947-4-1 UL508 CSA 22.2

Rating 400A	Maximum Horsepower/KW Rating 3 Phase HP/KW						Open Type	Discount Schedule JC11
1000V	200/208V	220/240V	380/415V	460V	575/600V	660-690V	Catalog #	Price
HP/KW	100/75	150/112	250/187	300/220	400/300	450/336	CV31U034A06-*	\$7283.00

1500V 400AMP Contactor Mechanically Interlocked Pair Wired 3 Pole IEC 947-4-1 (1000V) UL508 (1500V) CSA 22.2 (1500V)

Rating 400A	Maximum Horsepower/KW Rating 3 Phase HP/KW								Open Type	Discount Schedule JC11
1500V	200/208V	220/240V	415/440V	460V	575/600V	660-690V	1000V	1500V	Catalog #	Price
HP/KW	100/75	150/112	250/187	300/220	400/300	500/370	700/520	850/650	CV31U034A15-*	\$7540.00
Nema V320	100/70	125/95	200/150	300/220	300/220	-	500/370	900/670	CV31U033A15-*	\$7540.00

Options (Discount Schedule JC11) Field Kits

Description	Catalog #	Price
Lug Kit 3 Per Kit #4-500 mcm	KVC5-1	\$ 90
Lug Kit 3 Per Kit (2) #6-300 mcm	KVC5-2	\$100
Aux Contact Kit 2N/O 2N/C 10A 600VAC	AK1	\$73
Aux. Contact Kit 2N/O 2N/C 10MA 5VDC	AK3	\$220

Plug Stop Jogging Duty

Nema Size	200V	230V	400V	460V	575V
5	50HP	60HP	100HP	120HP	-
V320	75HP	100HP	150HP	175HP	200HP

Replacement Parts (Discount Schedule JC80)

Description	Catalog #	Price
Interrupter Phase Assembly	A460880A-1	\$650
Coil 110/120V 50/60 HZ	A77-460930A-1	\$284
Coil 220/240V 50/60 HZ	A77-460930A-2	\$284
Coil 380/415V 50/60 HZ	A77-460930A-3	\$284
Coil 440/480V 50/60 HZ	A77-460930A-4	\$284
Coil 125V DC	A77-460930A-5	\$284
Coil 250V DC	A77-460930A-6	\$284
Control PAK 110/120 50/60 HZ	A77-460916A-4	\$258
Control PAK 220/240 50/60 HZ	A77-460916A-5	\$258
Control PAK 380-415V 50/60 HZ 440-480V 50/60 HZ	A77-460916A-6	\$258
Aux. Contact Kit 2N/O 1N/C +1 N/C Late Break	AK Std.	\$ 92

Ordering Information

- Use complete catalog number when ordering. Replace the (*) with the suffix from the coil table.
- Engineering Data page A13.
- Renewal Parts page A10.

* Coil Table

Voltage	Suffix
120 AC	76
240 AC	26
380 AC	38
460 AC	46
125V DC	125
250V DC	250

USAVAC - Low Voltage

AC Vacuum Starters

- UL listed to 1500V
- CSA Certified to 1500V
- CE

- Three Ratings
- One Small Size

CVC Series
NEMA Size 5 V320
IEC 400A



A

600V NEMA Size 5 270A

600Volt Nema Size 5 270A Contactor 3 Pole Nema ICS-2 UL508 CSA 22.2

Rating Nema Size 5	Maximum Horsepower/KW Rating 3 Phase HP/KW				Open Type	Discount Schedule JC11
	600V	200/208V	230V	460V	575V	Catalog #
HP/KW	75/56	100/75	200/150	200/150	CV13U030506-*	\$2699

1000Volt 400AMP Contactor 3 Pole IEC 947-4-1 UL508 CSA 22.2

Rating 400A	Maximum Horsepower/KW Rating 3 Phase HP/KW						Open Type	Discount Schedule JC11
	1000V	200/208V	220/240V	400V	460V	575/600V	660-690V	Catalog #
HP/KW	100/75	150/112	250/187	300/220	400/300	450/336	CV13U034A06-*	\$2882

1500V 400AMP Contactor 3 Pole IEC 947-4-1 (1000V) UL508 (1500V) CSA 22.2 (1500V)

Rating 400A	Maximum Horsepower/KW Rating 3 Phase HP/KW								Open Type	Discount Schedule JC11
	1500V	200/208V	220/240V	380/415V	460V	575/600V	660-690V	1000V	1500V	Catalog #
HP/KW	100/75	150/112	250/187	300/220	400/300	500/370	700/520	850/650	CV13U034A15-*	\$3202
Nema V320	100/75	150/112	250/187	300/220	300/220	-	500/370	900/670	CV13U033A15-*	\$3202

Options (Discount Schedule JC11) Field Kits

Description	Catalog #	Price
Lug Kit 3 Per Kit #4-500 mcm	KVC5-1	\$ 90
Lug Kit 3 Per Kit (2) #6-300 mcm	KVC5-2	\$100
Aux Contact Kit 2N/O 2N/C 10A 600VAC	AK1	\$73
Aux. Contact Kit 2N/O 2N/C 10MA 5VDC	AK3	\$220

Replacement Parts (Discount Schedule JC80)

Description	Catalog #	Price
Interrupter Phase Assembly	A460880A-1	\$650
Coil 110/120V 50/60 HZ	A77-460930A-1	\$284
Coil 220/240V 50/60 HZ	A77-460930A-2	\$284
Coil 380/415V 50/60 HZ	A77-460930A-3	\$284
Coil 440/480V 50/60 HZ	A77-460930A-4	\$284
Coil 125V DC	A77-460930A-5	\$284
Coil 250V DC	A77-460930A-6	\$284
Control PAK 110/120 50/60 HZ	A77-460916A-4	\$258
Control PAK 220/240 50/60 HZ	A77-460916A-5	\$258
Control PAK 380-415V 50/60 HZ 440-480V 50/60 HZ	A77-460916A-6	\$258
Aux. Contact Kit 2N/O 1N/C +1 N/C Late Break	AK Std.	\$ 92

Ordering Information

- Use complete catalog number when ordering. Replace the (*) with the suffix from the coil table.
- Order Heaters at \$18.00 each from page 35.
- Engineering Data page A13.
- Renewal Parts page A11.

* Coil Table

Voltage	Suffix
120 AC	76
240 AC	26
380 AC	38
460 AC	46
125V DC	125
250V DC	250

- NEMA Size 5 & V 320
- IEC 400A

- Three Ratings
- One Small Size
- Use for Reversers, Reduced Voltage Auto Transformer Starters, Wye-Delta, 2 speed single winding, starter applications

3 Pole Nema ICS-2 UL508 CSA 22.2 Size 5 Reversing Starter 600V 270 AMP

Rating Nema Size 5	Maximum Horsepower/KW Rating 3 Phase HP/KW					Open Type	Discount Schedule JC11
600V	200V	230V	460V	575V		Catalog #	Price
HP/KW	75/56	100/75	200/150	200/150		CV30U030506-*	\$7269

3 Pole IEC 947-4-4 UL508 CSA 22.2 Reversing Starter 660V 400 AMP

Rating 400A	Maximum Horsepower/KW Rating 3 Phase HP/KW						Open Type	Discount Schedule JC11
1000V	200/208V	220/240V	380/415V	460V	575/600V	660-690V	Catalog #	Price
HP/KW	100/75	150/112	250/187	300/220	400/300	450/336	CV30U034A06-*	\$7833

3 Pole IEC 947-4-1 (1000V) UL508 (1500V) CSA 22.2 (1500V) 400A

Rating 400A Nema V320	Maximum Horsepower/KW Rating 3 Phase HP/KW								Open Type	Discount Schedule JC11
1500V	200/208V	220/240V	415/440V	460V	575/600V	660-690V	1000V	1500V	Catalog #	Price
HP/KW	100/75	150/112	250/187	300/220	400/300	500/370	700/520	850/650	CV30U034A15-*	\$8090
Nema V320	100/70	125/95	200/150	300/220	300/220	-	500/370	900/670	CV30U033A15-*	\$8090

Options (Discount Schedule JC11) Field Kits

Description	Catalog #	Price
Lug Kit 3 Per Kit #4-500 mcm	KVC5-1	\$ 90
Lug Kit 3 Per Kit (2) #6-300 mcm	KVC5-2	\$100
Aux Contact Kit 2N/O 2N/C 10A 600VAC	AK1	\$73
Aux. Contact Kit 2N/O 2N/C 10MA 5VDC	AK3	\$220

Plug Stop Jogging Duty

Nema Size	200V	230V	400V	460V	575V
5	50HP	60HP	100HP	120HP	-
V320	75HP	100HP	150HP	175HP	200HP

Replacement Parts (Discount Schedule JC80)

Description	Catalog #	Price
Interrupter Phase Assembly	A460880A-1	\$650
Coil 110/120V 50/60 HZ	A77-460930A-1	\$284
Coil 220/240V 50/60 HZ	A77-460930A-2	\$284
Coil 380/415V 50/60 HZ	A77-460930A-3	\$284
Coil 440/480V 50/60 HZ	A77-460930A-4	\$284
Coil 125V DC	A77-460930A-5	\$284
Coil 250V DC	A77-460930A-6	\$284
Control PAK 110/120 50/60 HZ	A77-460916A-4	\$258
Control PAK 220/240 50/60 HZ	A77-460916A-5	\$258
Control PAK 380-415V 50/60 HZ 440-480V 50/60 HZ	A77-460916A-6	\$258
Aux. Contact Kit 2N/O 1N/C +1 N/C Late Break	AK Std.	\$ 92

Ordering Information

- Use complete catalog number when ordering. Replace the (*) with the suffix from the coil table.
- Order Heaters at \$18.00 each from page A35
- Engineering Data page A13.
- Renewal Parts page A12.

*** Coil Table**

Voltage	Suffix
120 AC	76
240 AC	26
380 AC	38
460 AC	46
125V DC	125
250V DC	250

Technical Specifications CV Series

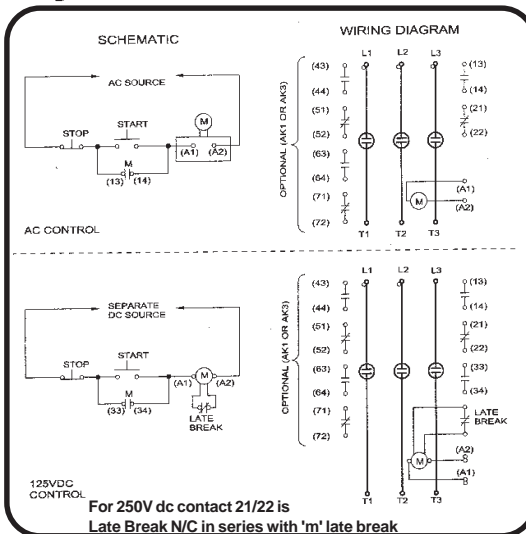
Description	NEMA Size 5 600V	400 Amp 1000V	400 Amp 1500V
Cat #	CV77U030506-*	CV77U034A06-*	CV77U034A15-*
Standard	NEMA ICS-2 UL508 CSA22.2	IEC 947-4-1 1000V UL508 CSA22.2	IEC 947-4-1 1000V NEMA ICS-2.9 1500V UL508 CSA22.2 1500V
Power Ratings			
Insul. & Operating Volt	600 Volts	1000 Volts	1500 Volts
Rated Oper. AC1	270 Amps	400 Amps	400 Amps
Rated Oper. AC3	200 HP 460/575V	500 HP-370KW-660V	850 HP-650KW-1500V
Rated Oper. AC4	120 HP 460/575V	300 HP-260KW-660V	650 HP-570KW-1500V
Rated Frequency	50 - 400 Hz		
Making Current	4000 Amps		
Breaking Current	3200 Amps		
Dielectric Strength	6Kv - 1 Min. Interruptor Gap		
Interrupting Current	4.6 KA		
Short Time Current1 Sec.	7000 A		
Short Time Current 10 Sec.	3200 A		
Mechanical Life	1.2 X 10 ⁶		
Elect. Life AC3 Duty	1 X 10 ⁶		
Switching Frequency	v600/ Hour 1 Every 6 Sec		
Withstand Current	18KA 50 MS		
Chop Current Max	0.9 A		
Operating Range	-15% + 10% - over Range Voltage		
Inrush Power VA	1100VA 120 ms Duration		
Holding Power VA	10-12 VA		
Opening Time MS	160ms		
Closing Time MS	20-40ms		
Pick-Up Voltage	80% Cold 85% Hot or less		
Drop-Out Voltage	70% or less		
Recommended CPT	400VA Machine Tool Transformer 5% Regulation at 20%pf		
Applications Ratings			
Mounting Installation	All Planes Contactor Only		
Altitude	6600 ft. 2000 Meters		
Ambient Storage	-65°F (-54°C) +160°F (71°C)		
Operating	-40°F (-40°C) +1.05°F (41°C)		
Vibration / Shock	40Hz - 2G. / 30G.		
Weight	26 lbs. 11.8 Kg.		

Power Rating

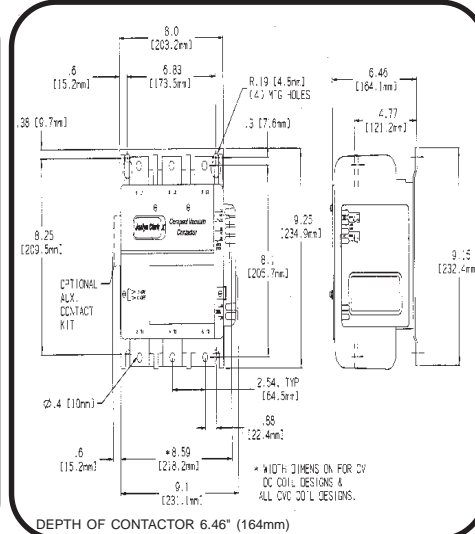
	Motor HP/KW AC3	
Voltage	270A	400A
208	75/56	100/75
220/240	100/75	150/112
380/415	----	250/187
460	200/150	300/220
575/600	200/150	400/300
660/690	----	450/336
1000	----	700/520
1500	----	850/650
Three Phase Transformer Load KVA		
Voltage	270A	400A
208	108	144
220/240	114	110
380/400	198	270
415/440	216	304
460/500	238	346
575/600	260	414
660	342	450
1000	520	692
1500	780	1038
Three Phase Capacitor Load KVAR		
Voltage	270A	400A
208	80	108
220/240	86	124
380/400	148	208
415/440	162	228
460	180	254
575/600	230	312
1000	390	520
1500	584	780

A

Diagram



Dimensions



Options

- Lug Kit #2#6-300mcm Cat.# KVC5-2
 - Auxiliary Contact Kits
 - 2NO.2 NC 600V.10A ac. Cat.# AK1
 - 2NO.2 NC 5V.10mA dc. Cat.# AK3
- Only 1 Kit can be added for total of 3 N/O 3 N/C contacts

Coils

Description	Hz.	Cat. Suffix
110/120V	50/60Hz.	-76
220/240V	50/60Hz.	-26
380/415	50/60Hz.	-38
440/480	50/60Hz.	-46
125 DC		-125
250DC		-250

AC Vacuum Contactors

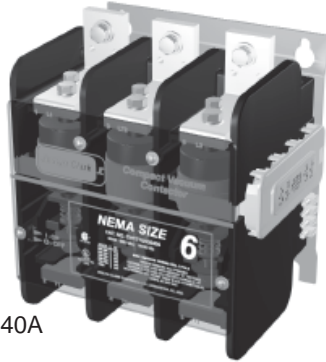
USAVAC - Low Voltage

- UL listed to 1500V
- CSA Certified to 1500V
- CE

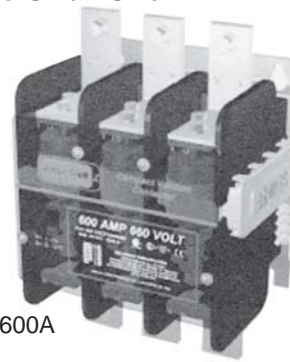
- Three Ratings
- One Small Size

CVC Series
NEMA Size 6
NEMA V600
IEC 600A

A



600V NEMA Size 6 540A



1000V 600A

600Volt Nema Size 6 540A Contactor 3 Pole Nema ICS-2 UL508 CSA 22.2

Rating Nema Size 6	Maximum Horsepower/KW Rating 3 Phase HP/KW				Open Type	Discount Schedule JC11
	600V	200/208V	250V	460V	575V	Catalog #
HP/KW	150/112	200/150	400/300	400/300	CV77U030606-*	\$3203

1000Volt 400AMP Contactor 3 Pole IEC 947-4-1 UL508 CSA 22.2

Rating 600A 1000V	Maximum Horsepower/KW Rating 3 Phase HP/KW						Open Type	Discount Schedule JC11
	1000V	200/208V	220/240V	400V	460V	575/600V	660-690V	Catalog #
HP/KW	200/150	200/150	250/187	400/300	600/4500	650/485	CV77U036A06-*	\$3386

1500V 400AMP Contactor 3 Pole IEC 947-4-1 (1000V) UL508 (1500V) CSA 22.2 (1500V)

Rating 600A Nema V600	Maximum Horsepower/KW Rating 3 Phase HP/KW								Open Type	Discount Schedule JC11
	1500V	200/208V	220/240V	400V	460V	575/600V	660-690V	1000V	1500V	Catalog #
HP/KW	250/150	200/150	250/187	400/300	600/450	650/485	1000/750	1200/900	CV77U036A15-*	\$3523
Nema V600	200/150	200/150	375/280	500/350	600/470	-	1100/820	1600/1200	CV77U036V15-*	\$3523

Options (Discount Schedule JC11) Field Kits

Description	Catalog #	Price
Wire Size (2) #2-600 mcm	KVC6-2	\$156
Aux Contact Kit 2N/O 2N/C 10A 600VAC	AK1	\$73
Aux. Contact Kit 2N/O 2N/C 10MA 5VDC	AK3	\$220

Replacement Parts (Discount Schedule JC80)

Description	Catalog #	Price
Interrupter Phase Assembly	A77460880A-2	\$851
Coil 110/120V 50/60 HZ	A77-460930A-1	\$284
Coil 220/240V 50/60 HZ	A77-460930A-2	\$284
Coil 380/415V 50/60 HZ	A77-460930A-3	\$284
Coil 440/480V 50/60 HZ	A77-460930A-4	\$284
Coil 125V DC	A77-460930A-7	\$284
Coil 250V DC	A77-460930A-8	\$284
Control PAK 110/120 50/60 HZ	A77-460916A-4	\$258
Control PAK 110/120 50/60 HZ	A77-460916A-5	\$258
Control PAK 380-415V 50/60 HZ 440-480V 50/60 HZ	A77-460916A-6	\$258
Aux. Contact Kit 2N/O 1N/C +1 N/C Late Break	AK Std.	\$ 92

Ordering Information

- Use complete catalog number when ordering. Replace the (*) with the suffix from the coil table.
- Engineering Data page A19
- Renewal Parts page A14.

* Coil Table

Voltage	Suffix
120 AC	-76
240 AC	-26
380 AC	-38
460 AC	-46
125V DC	-125
250V DC	-250

USAVAC - Low Voltage

AC Mechanically Interlocked Vacuum Contactors Unwired

- CE
- NEMA Size 6 & V600
- IEC 600A

- Three Ratings
- One Small Size
- Use for Reversing, Reduced Voltage Auto Transformer, Wye-Delta, 2 speed single winding, or 2 speed 2 winding applications



3 Pole Nema Rated ICS-2 UL508 CSA 22.2 Mechanically Interlocked Pair Unwired 600V Size 6 540 AMP

Rating Nema Size 6	Maximum Horsepower/KW Rating 3 Phase HP/KW				Open Type	Discount Schedule JC11
600V	200/208V	250V	460V	575V	Catalog #	Price
HP/KW	150/112	200/150	400/300	400/300	CV31U030606*-43	\$11968

3 Pole IEC 947-4-1 UL508 CSA 22.2 Mechanically Interlocked Pair Unwired 1000 Volt 600 AMP

Rating 600A 1000V	Maximum Horsepower/KW Rating 3 Phase HP/KW						Open Type	Discount Schedule JC11
1000V	200/208V	220/240V	400V	460V	575/600V	660-690V	Catalog #	Price
HP/KW	200/150	200/150	250/187	400/300	600/450	650/485	CV31U036A06*-43	\$13212

3 Pole IEC 947-4-1 (1000V) UL508 (1500V) CSA 22.2 (1500V) Mechanically Interlocked Pair Unwired 1.5 KV 60AMP

Rating 600A Nema V600	Maximum Horsepower/KW Rating 3 Phase HP/KW								Open Type	Discount Schedule JC11
1500V	200/208V	220/240V	400V	460V	575/600V	660-690V	1000V	1500V	Catalog #	Price
HP/KW	200/150	200/150	250/187	400/300	600/450	650/485	1000/750	1200/900	CV31U036A15*-43	\$13432
Nema V600	200/150	200/150	375/280	500/350	600/470	-	1100/820	1600/1200	CV31U036V15*-43	\$13432

Options (Discount Schedule JC11) Field Kits

Description	Catalog #	Price
Wire Size (2) #2-600 mcm	KVC6-2	\$156
Aux Contact Kit 2N/O 2N/C 10A 600VAC	AK1	\$73
Aux. Contact Kit 2N/O 2N/C 10MA 5VDC	AK3	\$220

Plug Stop Jogging Duty

Nema Size	200V	230V	400V	460V	575V
6	100HP	120HP	200HP	240HP	-
V600	150HP	150HP	300HP	375HP	450HP

Replacement Parts (Discount Schedule JC80)

Description	Catalog #	Price
Interrupter Phase Assembly	A77460880A-2	\$851
Coil 110/120V 50/60 HZ	A77-460930A-1	\$284
Coil 220/240V 50/60 HZ	A77-460930A-2	\$284
Coil 380/415V 50/60 HZ	A77-460930A-3	\$284
Coil 440/480V 50/60 HZ	A77-460930A-4	\$284
Coil 125V DC	A77-460930A-7	\$284
Coil 250V DC	A77-460930A-8	\$284
Control PAK 110/120 50/60 HZ	A77-460916A-4	\$258
Control PAK 110/120 50/60 HZ	A77-460916A-5	\$258
Control PAK 380-415V 50/60 HZ 440-480V 50/60	A77-460916A-6	\$258
Aux. Contact Kit 2N/O 1N/C +1 N/C Late Break	AK Std.	\$ 92

Ordering Information

- Use complete catalog number when ordering. Replace the (*) with the suffix from the coil table.
- Engineering Data page A19
- Renewal Parts page A15.

* Coil Table

Voltage	Suffix
120 AC	-76
240 AC	-26
380 AC	-38
460 AC	-46
125V DC	-125
250V DC	-250

USAVAC - Low Voltage AC Mechanically Interlocked Wired Vacuum Contactors

- CE
- NEMA Size 6 & V600
- IEC 600A

- Three Ratings
- One Small Size
- Use for Reversing, Reduced Voltage Auto Transformer, Wye-Delta, 2 speed single winding, or 2 speed 2 winding applications

A

3 Pole Nema Rated ICS-2 UL508 CSA 22.2 Mechanically Interlocked Pair Unwired 600V Size 6 540 AMP

Rating Nema Size 6	Maximum Horsepower/KW Rating 3 Phase HP/KW				Open Type	Discount Schedule JC11
600V	200/208V	250V	460V	575V	Catalog #	Price
HP/KW	150/112	200/150	400/300	400/300	CV31U030606*-	\$16052.00

3 Pole IEC 947-4-1 UL508 CSA 22.2 Mechanically Interlocked Pair Unwired 1000 Volt 600 AMP

Rating 600A V600	Maximum Horsepower/KW Rating 3 Phase HP/KW						Open Type	Discount Schedule JC11
1000V	200/208V	220/240V	400V	460V	575/600V	660-690V	Catalog #	Price
HP/KW	200/150	200/150	250/187	400/300	600/450	650/485	CV31U036A06*-	\$16562.00

3 Pole IEC 947-4-1 (1000V) UL508 (1500V) CSA 22.2 (1500V) Mechanically Interlocked Pair Unwired 1.5 KV 600AMP

Rating 600A Nema 1000V	Maximum Horsepower/KW Rating 3 Phase HP/KW								Open Type	Discount Schedule JC11
1500V	200/208V	220/240V	400V	460V	575/600V	660-690V	1000V	1500V	Catalog #	Price
HP/KW	200/150	200/150	250/187	400/300	600/450	650/485	1000/750	1200/900	CV31U036A15*-	\$17477.00
Nema V600	200/150	200/150	375/280	500/350	600/470	-	1100/820	1600/1200	CV31U036V15*-	\$17477.00

Options (Discount Schedule JC11) Field Kits

Description	Catalog #	Price
Wire Size (2) #2-600 mcm	KVC6-2	\$156
Aux Contact Kit 2N/O 2N/C 10A 600VAC	AK1	\$73
Aux. Contact Kit 2N/O 2N/C 10MA 5VDC	AK3	\$220

Plug Stop Jogging Duty

Nema Size	200V	230V	400V	460V	575V
6	100HP	120HP	200HP	240HP	-
V600	150HP	150HP	300HP	375HP	450HP

Replacement Parts (Discount Schedule JC80)

Description	Catalog #	Price
Interrupter Phase Assembly	A77460880A-2	\$851
Coil 110/120V 50/60 HZ	A77-460930A-1	\$284
Coil 220/240V 50/60 HZ	A77-460930A-2	\$284
Coil 380/415V 50/60 HZ	A77-460930A-3	\$284
Coil 440/480V 50/60 HZ	A77-460930A-4	\$284
Coil 125V DC	A77-460930A-7	\$284
Coil 250V DC	A77-460930A-8	\$284
Control PAK 110/120 50/60 HZ	A77-460916A-4	\$258
Control PAK 110/120 50/60 HZ	A77-460916A-5	\$258
Control PAK 380-415V 50/60 HZ 440-480V 50/60 HZ	A77-460916A-6	\$258
Aux. Contact Kit 2N/O 1N/C +1 N/C Late Break	AK Std.	\$ 92

Ordering Information

- Use complete catalog number when ordering. Replace the (*) with the suffix from the coil table.
- Engineering Data page A19
- Renewal Parts page A16.

* Coil Table

Voltage	Suffix
120 AC	-76
240 AC	-26
380 AC	-38
460 AC	-46
125V DC	-125
250V DC	-250

- CE
- NEMA Size 6 & V 600
- IEC 600A



- Three Ratings
- One Small Size

CV Series
NEMA Size 6
IEC 600A

A

600Volt Nema Size 6 540A Starter 3 Pole Nema ICS-2 UL508 CSA 22.2

Rating Nema Size 6	Maximum Horsepower/KW Rating 3 Phase HP/KW				Open Type	Discount Schedule JC11	
	600V	200/208V	2500V	460V	575V	Catalog #	Price
HP/KW	150/112	200/150	400/300	400/300	400/300	CV13U030606-*	\$3898

1000Volt 400AMP Contactor 3 Pole IEC 947-4-1 UL508 CSA 22.2

Rating 600A 1000V	Maximum Horsepower/KW Rating 3 Phase HP/KW						Open Type	Discount Schedule JC11	
	1000V	200/208V	220/240V	400V	460V	575/600V	660-690V	Catalog #	Price
HP/KW	200/150	200/150	250/187	400/300	600/450	650/485	650/485	CV13U036A06-*	\$4081

1500 Volt 600 AMP Starter 3 Pole ICS 2-9 IEC 947-4-1 (1000V) UL508 (1500V) CSA 22.2 (1500V)

Rating 600A Nema V600	Maximum Horsepower/KW Rating 3 Phase HP/KW								Open Type	Discount Schedule JC11	
	1500V	200/208V	220/240V	400V	460V	575/600V	660-690V	1000V	1500V	Catalog #	Price
HP/KW	200/150	200/150	250/187	400/300	600/450	650-485	1000/750	1200/900	1500/1200	CV13U036A15-*	\$4483
Nema V600	200/150	200/150	375/280	500/350	600/470		1100/820	1600/1200		CV13U036V15-*	\$4483

Options (Discount Schedule JC11) Field Kits

Description	Catalog #	Price
Wire Size (2) #2-600 mcm	KVC6-2	\$156
Aux Contact Kit 2N/O 2N/C 10A 600VAC	AK1	\$73
Aux. Contact Kit 2N/O 2N/C 10MA 5VDC	AK3	\$220

Replacement Parts (Discount Schedule JC80)

Description	Catalog #	Price
Interrupter Phase Assembly	A77460880A-2	\$851
Coil 110/120V 50/60 HZ	A77-460930A-1	\$284
Coil 220/240V 50/60 HZ	A77-460930A-2	\$284
Coil 380/415V 50/60 HZ	A77-460930A-3	\$284
Coil 440/480V 50/60 HZ	A77-460930A-4	\$284
Coil 125V DC	A77-460930A-7	\$284
Coil 250V DC	A77-460930A-8	\$284
Control PAK 110/120 50/60 HZ	A77-460916A-4	\$258
Control PAK 110/120 50/60 HZ	A77-460916A-5	\$258
Control PAK 380-415V 50/60 HZ 440-480V 50/60 HZ	A77-460916A-6	\$258
Aux. Contact Kit 2N/O 1N/C +1 N/C Late Break	AK Std.	\$ 92

Ordering Information

- Use complete catalog number when ordering. Replace the (*) with the suffix from the coil table.
- Order Heaters at \$18.00 each from page A35
- Engineering Data page A19.
- Renewal Parts page A17.

*** Coil Table**

Voltage	Suffix
120 AC	-76
240 AC	-26
380 AC	-38
460 AC	-46
125V DC	-125
250V DC	-250

A

- NEMA Size 6 & V600
- IEC 600A

- Three Ratings
- One Small Size
- Use on Reversers Reduced Voltage Auto Transformers, Wye-Delta & 2 speed single or double winding starter applications.

600Volt Nema Size 6 540A Starter 3 Pole Nema ICS-2 UL508 CSA 22.2

Rating Nema Size 6	Maximum Horsepower/KW Rating 3 Phase HP/KW				Open Type	Discount Schedule JC11
600V	200/208V	250V	460V	575V	Catalog #	Price
HP/KW	150/112	200/150	400/300	400/200	CV30U030606-*	\$16602

1000Volt 600A Reversing Starter 3 Pole IEC 947-4-1 UL508 CSA 22.2

Rating 600A	Maximum Horsepower/KW Rating 3 Phase HP/KW							Open Type	Discount Schedule JC11
660V	200/208V	220/240V	380/400V	415/440V	460V	575/600V	660-690V	Catalog #	Price
HP/KW	200/150	200/150	250/187	450/330	400/300	600/450	650/485	CV30U036A06-*	\$17112

1500 Volt 600 AMP Starter 3 Pole ICS 2-9 IEC 947-4-1 (1000V) UL508 (1500V) CSA 22.2 (1500V)

Rating 600A	Maximum Horsepower/KW Rating 3 Phase HP/KW								Open Type	Discount Schedule JC11
1500V	200/208V	220/240V	400V	460V	575/600V	660-690V	1000V	1500V	Catalog #	Price
HP/KW	200/150	200/150	375/280	400/300	600/450	650/485	1000/750	1200/900	CV30U036A15-*	\$18027
Nema V600	200/150	200/150	375/280	500/350	600/470	-	1100/820	1600/1200	CV30U036V15-*	\$18027

Options (Discount Schedule JC11) Field Kits

Description	Catalog #	Price
Wire Size (2) #2-600 mcm	KVC6-2	\$156
Aux Contact Kit 2N/O 2N/C 10A 600VAC	AK1	\$73
Aux. Contact Kit 2N/O 2N/C 10MA 5VDC	AK3	\$220

Plug Stop Jogging Duty

Nema Size	200V	230V	400V	460V	575V
6	100HP	120HP	200HP	240HP	-
V600	150HP	150HP	300HP	375HP	450HP

Replacement Parts (Discount Schedule JC80)

Description	Catalog #	Price
Interrupter Phase Assembly	A77460880A-2	\$851
Coil 110/120V 50/60 HZ	A77-460930A-1	\$284
Coil 220/240V 50/60 HZ	A77-460930A-2	\$284
Coil 380/415V 50/60 HZ	A77-460930A-3	\$284
Coil 440/480V 50/60 HZ	A77-460930A-4	\$284
Coil 125V DC	A77-460930A-7	\$284
Coil 250V DC	A77-460930A-8	\$284
Control PAK 110/120 50/60 HZ	A77-460916A-4	\$258
Control PAK 110/120 50/60 HZ	A77-460916A-5	\$258
Control PAK 380-415V 50/60 HZ 440-480V 50/60 HZ	A77-460916A-6	\$258
Aux. Contact Kit 2N/O 1N/C +1 N/C Late Break	AK Std.	\$ 92

Ordering Information

- Use complete catalog number when ordering. Replace the (*) with the suffix from the coil table.
- Order Heaters at \$18.00 each from page A35
- Engineering Data page A19.
- Renewal Parts page A18.

* Coil Table

Voltage	Suffix
120 AC	-76
240 AC	-26
380 AC	-38
460 AC	-46
125V DC	-125
250V DC	-250

Technical Specifications CVC Series

Description	NEMA Size 6 600V	600 Amp 1000V	600 Amp 1500V
Cat #	CV 77U030606-*	CV 77U036A06-*	CVC 77U036A15-*
Standard	NEMA 1CS-2 UL508 CSA22.2	IEC 947-4-1 NEMA 1CS-2-9 UL508 CSA22.2	IEC 947-4-1 1000V NEMA 1CS-2-9 UL508 CSA22.2 1500V
Power Ratings			
Insul. & Operating Volt	600 Volts	1000 Volts	1500 Volts
Rated Oper. AC1	540 Amps	600 Amps	600 Amps
Rated Oper. AC3	400 HP 460/575V	750 HP-550KW-660V	1200 HP-900KW-1500V
Rated Oper. AC4	250 HP 460/575V	525 HP-390KW-660V	950 HP-700KW-1500V
Rated Frequency	50 - 400 Hz		
Making Current	6000 Amps		
Breaking Current	4800 Amps		
Dielectric Strength	6Kv - 1 Min. Interruptor Gap		
Interrupting Current	6 KA		
Short Time Current 1 Sec.	9000 A		
Short Time Current 10 Sec.	4800 A		
Mechanical Life	.75 X 10 ⁶		
Elect. Life AC3 Duty	.5 X 10 ⁶		
Switching Frequency	300 / Hour 1 Every 12 Sec.		
Withstand Current	30KA50MS		
Chop Current Max	0.9 A		
Operating Range	-15% + 10% - over Range Voltage		
Inrush Power VA	1600VA 120 msec Duration		
Holding Power VA	10-12.5VA		
Opening Time MS	160ms		
Closing Time MS	20-40 msec		
Pick-Up Voltage	80% Cold 85% Hot or less		
Drop-Out Voltage	70% or less		
Recommended CPT	400VA Machine Tool Transformer 5% Regulation at 20%pf		
Applications Ratings			
Mounting Installation	All Planes contactor only		
Altitude	6600 ft. 2000 Meters		
Ambient Storage	-65°F (-54°C) +160°F (71°C)		
Operating	-40°F (-40°C) +105°F (41°C)		
Vibration / Shock	40Hz - 2G. / 30G.		
Weight	28 lbs. 12.7 Kg.		

Power Rating

Voltage	Motor HP/KW AC3	
	540A	600A
208	150/112	200/150
220/240	200/150	200/150
400	----	250/187
460	400/300	500/350
575/600	400/300	600/450
660/690	----	650/485
1000	----	1000/750
1500	----	1200/900
Three Phase Transformer Load KVA		
Voltage	540A	600A
208	194	216
220/240	224	249
380/400	396	415
415/440	432	450
460/500	476	519
575/600	520	620
660	617	685
1000	1040	1384
1500	1560	2076
Three Phase Capacitor Load KVAR		
Voltage	540A	600A
208	160	173
220/240	172	200
380/400	296	332
415/440	324	366
460	360	382
575/600	460	500
1000	780	830
1500	1168	1250

A

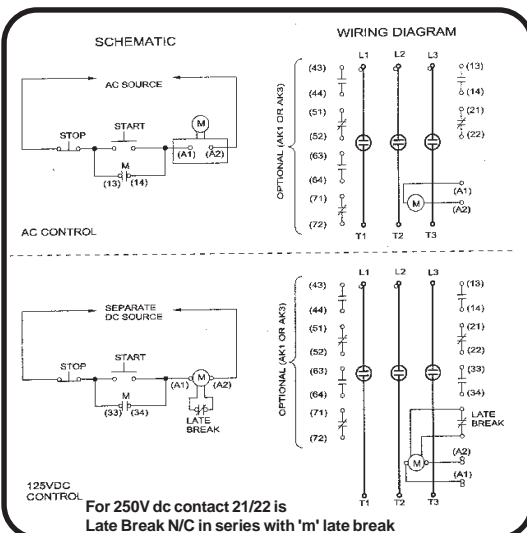
Options

- Lug Kit 2 #2-600mcm Cat.# KVC6-2
 - **Auxiliary Contact Kits**
 - 2NO.2 NC 600V.10A ac. Cat.# AK1
 - 2NO.2 NC 5V.10mA dc. Cat.# AK3
- Only 1 Kit can be added for total of 3 N/O 3 N/C contacts

Coils

Description	Hz.	Cat. Suffix
110/120V	50/60Hz.	-76
220/240V	50/60Hz.	-26
380/415	50/60Hz.	-38
440/480	50/60Hz.	-46
125 DC		-125
250DC		-250

Diagram



Dimensions

